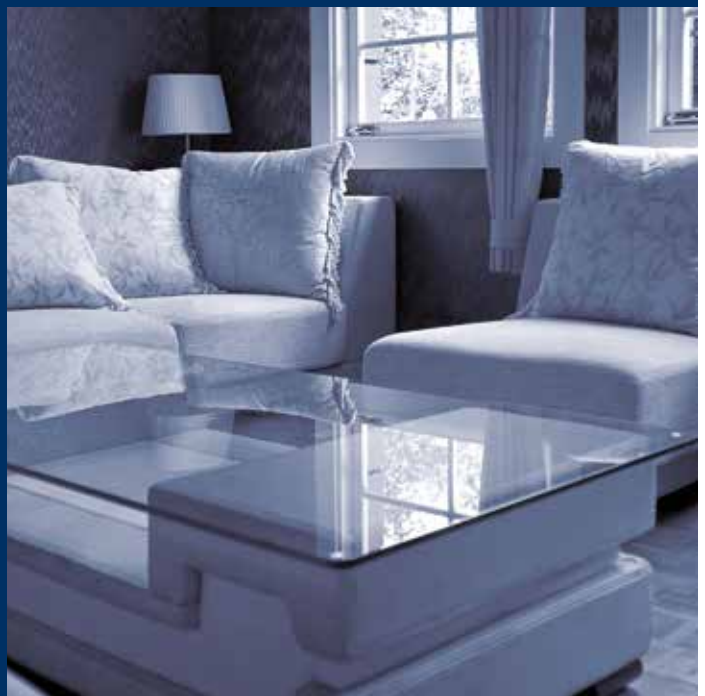


# runner / runner line

cutting tables



CMS is part of SCM Group, a technological world leader in processing a wide range of materials: wood, plastic, glass, stone, metal and composites. The Group companies, operating throughout the world, are reliable partners of leading manufacturing industries in various market sectors, including the furniture, construction, automotive, aerospace, ship-building and plastic processing industries. SCM Group coordinates, supports and develops a system of industrial excellence in 3 large highly specialized production centers employing more than 4,000 workers and operating in all 5 continents. SCM Group: the most advanced skills and know-how in the fields of industrial machinery and components.

CMS SpA manufactures machinery and systems for the machining of composite materials, carbon fibre, aluminium, light alloys, plastic, glass, stone and metals. It was established in 1969 by Mr Pietro Aceti with the aim of offering customized and state-of-the-art solutions, based on the in-depth understanding of the customer's production needs. Significant technological innovations, originating from substantial investments in research and development and take-overs of premium companies, have enabled constant growth in the various sectors of reference.



**CMS Glass Technology** is a leader in the field of curved and flat glass working with technologically advanced solutions such as numerically controlled machining centres, cutting benches and water-jet cutting systems. Thanks to the tradition and experience of the historic brands Brembana and Tecnocut, today **CMS Glass Technology** is an absolute protagonist in this sector for the manufacturing of innovative solutions dedicated to architecture and interior decoration.

# runner / runner line

<b>APPLICATIONS</b>	4-5
<b>RUNNER TECHNOLOGICAL BENEFITS</b>	6-7
<b>RUNNER LINE TECHNOLOGICAL BENEFITS</b>	8-9
<b>ACCESSORIES</b>	10-11
<b>SOFTWARE</b>	12-13
<b>THE RANGE</b>	14-15



# APPLICATIONS



doors | structural facades and windows | ovens and cooktops



mirrors | showers | photovoltaic systems | tables



**S**uited.  
**I**nnovative.  
**M**odern.  
**P**ractical.  
**L**ean.  
**E**asy solutions.

The **SIMPLE** way for glass cutting.

Cutting table

# RUNNER

## TECHNOLOGICAL BENEFITS

Runner is a tilting cutting table with three interpolated axes for straight and shaped cutting of flat glass plates with thickness ranging from 3 to 25 mm.

- Electrical and electronic equipment are completely integrated in the machine's basement. This solution saves floor space, assures a very easy diagnostic of potential errors, and provides the utmost airconditioning system (air-conditioning system optional)
- Mechanical motorized tilting system of the work table makes it easy to load/unload glass sheets in small spaces and guarantees a long machine life, absolute reduction of maintenance and smooth movement.
- High pressure turbine that generates an air cushion simplifying the handling of glass sheets; the air cushion can be set in two positions, depending on glass dimensions and thickness.
- Cutting head completely engineered by CMS with automatic control of the cutting pressure depending on glass thickness and oil flow according to the cutting speed.
- "C" axis included in the standard supply, guarantees the highest accuracy in shaped cuts.



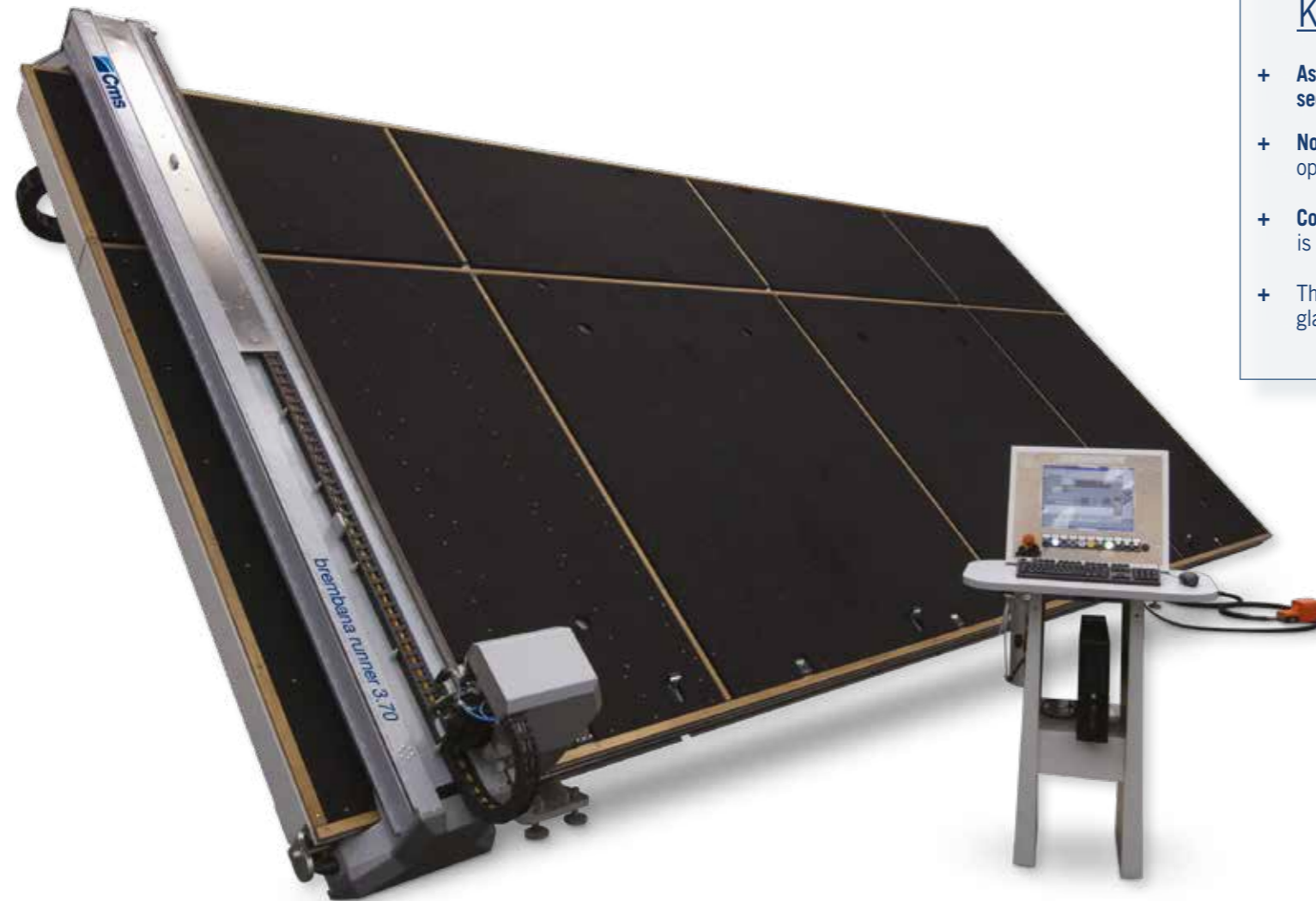
The work table is equipped with an air cushion which can be set in two positions, depending on glass dimensions and thickness



Mechanical tilting system. The automatic exit of loading feet is commanded during the work table tilting



Electrical cabinet integrated into the basement



### KEY BUYER BENEFITS

- + **Astest tilting table:** the system for the overturning of type mechanical, with chain transmission, allows **tipping times of less than 20 seconds**. Unlike hydraulic systems, maintenance is zeroed..
- + **No setting time:** thanks to the patented four-head system for automatic management of cutting of different thicknesses, no manual operation is required. Each head carries a wheel that is specific for its thickness, guaranteeing **zero stop times when changing the sheet**.
- + **Complete removal of the low-e:** the peripheral grinding wheel **eliminates the low emissivity layer with speeds up to 80 m / min**. The device is suitable for intensive use to work continuously with all types of Low-E..
- + The double zero function allows the management of the laminated glass cutting. The software generates two mirror programs, the glass is zeroed on two opposite stops with **accuracies lower than 2 tenths of a millimeter**.

#### RUNNER: TECHNICAL DATA

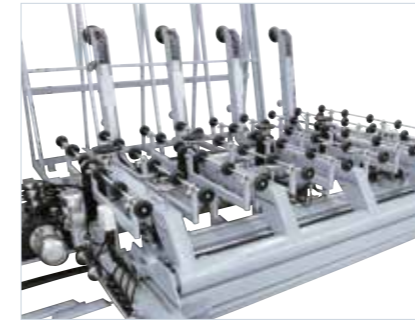
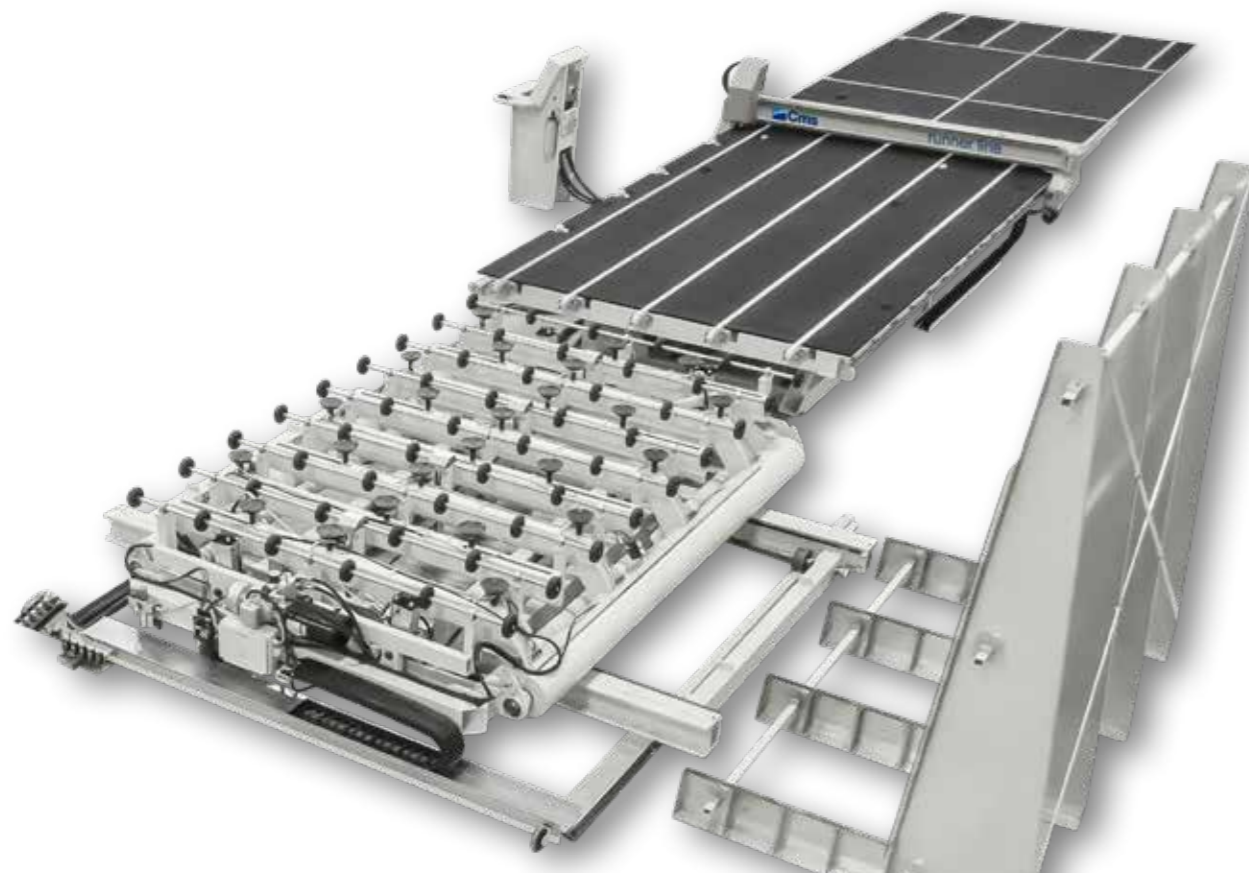
MODEL	3.70	6.20
AXES MAXIMUM STROKE X-Y-C	4400 mm – 2600 mm – 360° / 173 in – 102 in – 360°	6900 mm – 3350 mm – 360° / 272 in – 132 in – 360°
USEFUL WORKING AREA	4250 mm – 2560 mm / 167 in – 101 in	6790 mm – 3310 mm / 267 in – 130 in
WORKABLE THICKNESS	3 - 25 mm / +1/8 - 1 in	3 - 25 mm / +1/8 - 1 in
ACCURACY AND REPEATIBILITY	± 0,20mm / ±0,15mm	± 0,20mm / ±0,15mm
MAXIMUM SPEED AND ACCELERATION	160 m/min - 5 m/s <sup>2</sup> / 530 ft/min - 16 ft/s <sup>2</sup>	160 m/min - 5 m/s <sup>2</sup> / 530 ft/min - 16 ft/s <sup>2</sup>
WEIGHT	3500 Kg / 7700 lb	5100 Kg / 11250 lb

# RUNNER LINE

## TECHNOLOGICAL BENEFITS

Fixed cutting table with glass transport belts, three interpolated axes for cutting panes of straight and shaped flat glass with thickness from 3 to 19 mm, normally in line with loader and cut off bench.

- The system with belts allows the automatic movement of glass sheets for every cycles: in-feeding, positioning, working and out-feeding.
- Wide range of loading configuration and costumization, able to satisfy every customer's request.
- The cutting in-line with loading, cutting and unloading, allow to process higher quantities, avoiding losses of time compared to standalone cutting tables.



Loader fixed or mobile, with single or double station, for automatic loading of the glass sheets placed vertically



Side pneumatic pusher



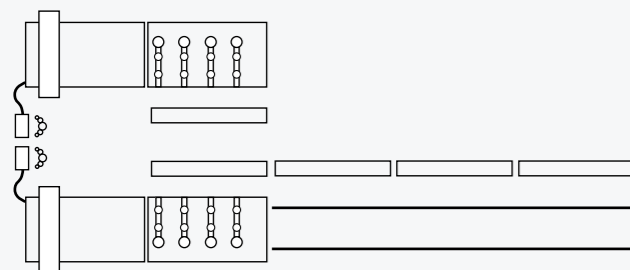
Belts for glass handling

### KEY BUYER BENEFITS

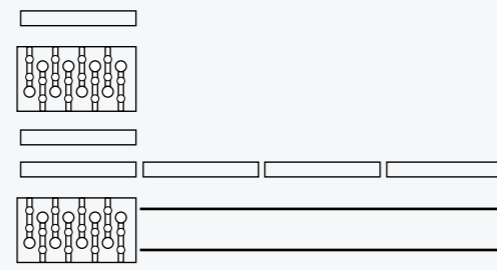
- + **Automatic sheet positioning:** the pneumatic side reference, thanks to the 40mm stroke, allows the zeroing of plates arriving from an upstream machine. The exclusive reference insertion system guarantees superior performance and no routine maintenance.
- + **No setting time:** thanks to the patented four-head system for automatic management of cutting of different thicknesses, no manual operation is required. Each head carries a wheel that is specific for its thickness, guaranteeing zero stop times when changing the sheet.
- + **Complete removal of the low-e:** the peripheral grinding wheel eliminates the low emissivity layer with speeds up to 80 m / min. The device is suitable for intensive use to work continuously with all types of Low-E.
- + **Glassware management:** Runner Line manages the printing of bar codes to trace the cut pieces by integrating with the management of the glassware. Printing is fully integrated into the cutting process, avoiding possible operator errors and leading to time savings of over 31%.

### EXAMPLES FOR LOADING

FROM 1 TO 4 STATIONS WITH LEFT OR RIGHT LOADING



FROM 1 TO 4 STATIONS WITH DOUBLE SIDE LOADING



### RUNNER LINE: TECHNICAL DATA

MODEL	3.70	6.20
AXES MAXIMUM STROKE X-Y-C	4400 mm – 2600 mm – 360° / 173 in – 102 in – 360°	6900 mm – 3350 mm – 360° / 272 in – 132 in – 360°
USEFUL WORKING AREA	4250 mm – 2560 mm / 167 in – 101 in	6790 mm – 3310 mm / 267 in – 130 in
WORKABLE THICKNESS	3 - 25 mm / +1/8 - 3/4 in	3 - 25 mm / +1/8 - 3/4 in
ACCURACY AND REPEATABILITY	± 0,20mm / ±0,15mm	± 0,20mm / ±0,15mm
MAXIMUM SPEED AND ACCELERATION	160 m/min - 5 m/s <sup>2</sup> / 530 ft/min - 16 ft/s <sup>2</sup>	160 m/min - 5 m/s <sup>2</sup> / 530 ft/min - 16 ft/s <sup>2</sup>
WEIGHT	according to the configuration	

# ACCESSORIES

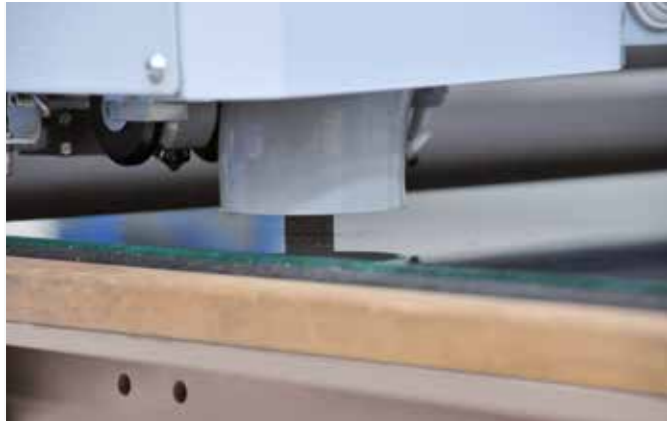
Shape reading system mounted at the side of the cutting head with optical shape reader and dedicated software for the translation of arcs and straight lines



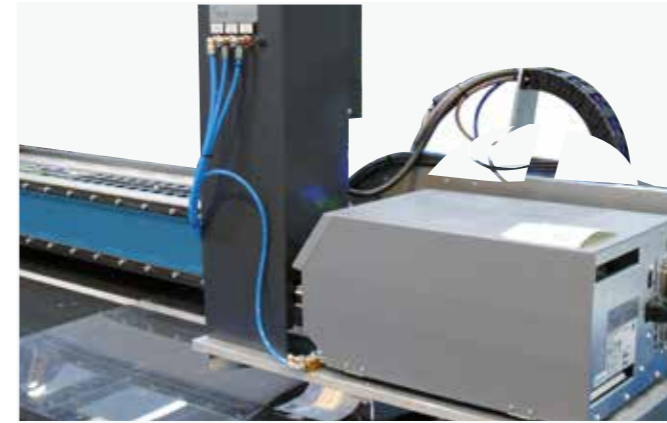
Suction cups for handling glass sheets (optional available only for Runner)



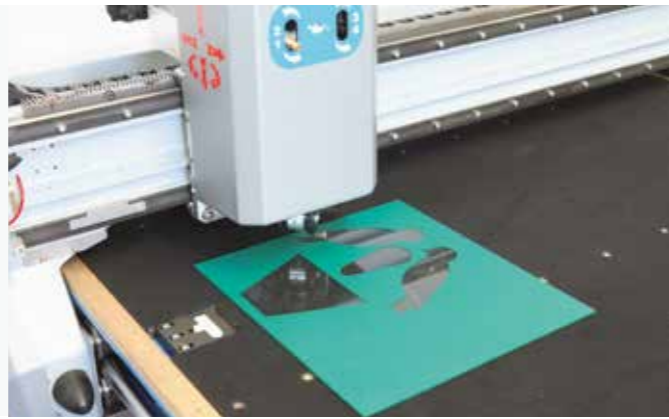
System for low-e removal with a peripheral wheel



Labeling machine for printing and fixing on the single cut pieces a barcode with useful information for the operator (optional available for Runner / Runner Line)



Cutting of the vinyl



Four heads for automatic management of different glass thickness cut (optional available for Runner / Runner Line)



Double-zero function for cutting laminated glass (Optional available only for Runner)



Peripheral wheel for high speed low-e removal (optional available for Runner / Runner Line)



# SOFTWARE

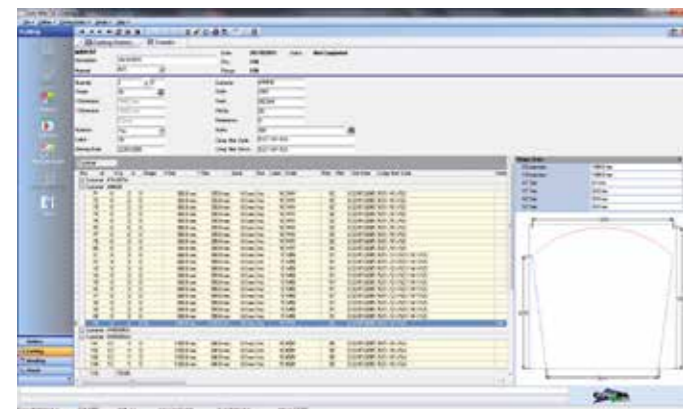


## Opti-way CAD

### ADVANCED SOFTWARE SYSTEMS FOR THE PROGRAMMING IN OFFICE

The software OPTI-WAY CAD is specifically engineered for the office management of the work and includes:

- one software key OPTI-WAY CAD for the office working
- one software key EDIT-WAY CAD for the working on board the machine  
It adds to EDIT-WAY CAD functions the possibility to enter cutting or

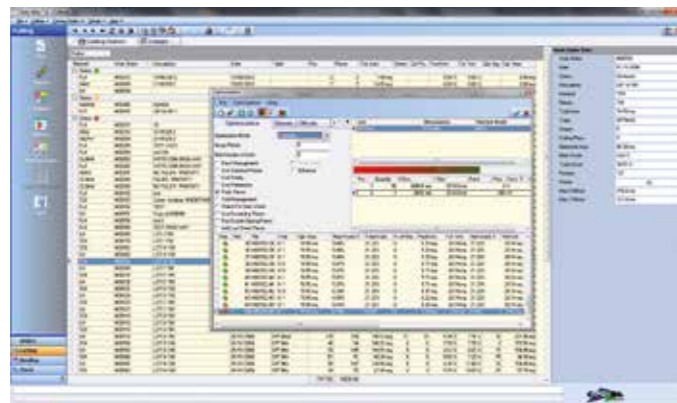


### PROGRAMMING SOFTWARE

OPTIMA Software is the most advanced and specialized CAD/CAM software solution for the cut of flat glass with CMS Brembana machines: it offers a complete range of applications to meet any requirements of the glassworks market and to satisfy all end-customer needs.

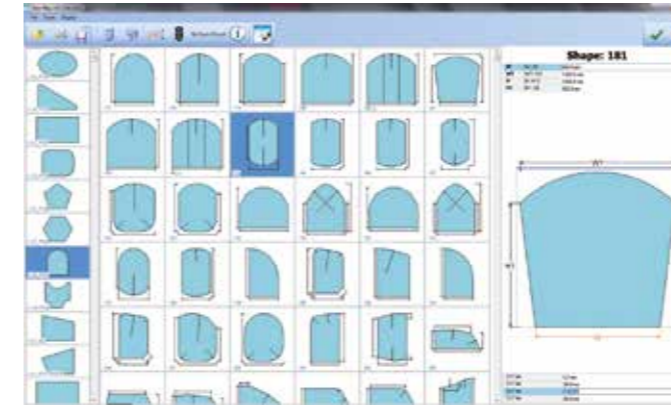
order portfolio data manually or automatically and to prepare data for production, create labels and bar-codes, manage glass warehouse, etc.

Are furthermore available advanced modules for the office management of the single machine, rolling stock of machines or the complete production.

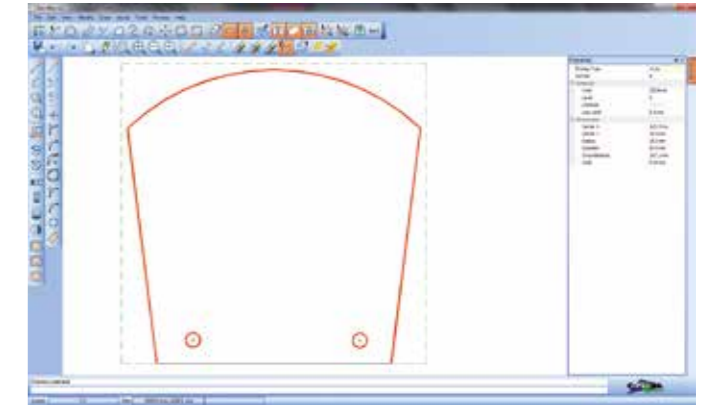


## Edit-way CAD

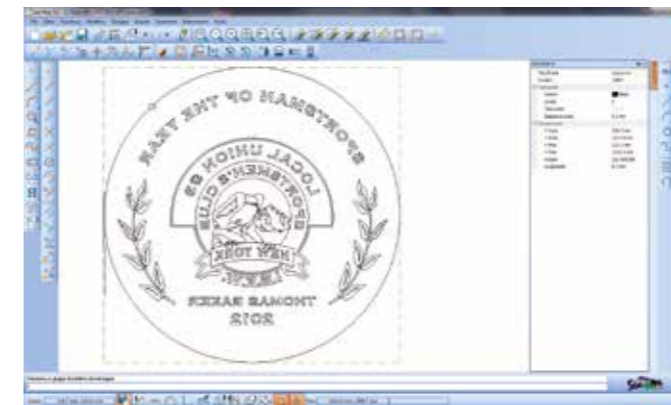
### OPTIMIZATION SOFTWARE FOR THE PROGRAMMING ON BOARD THE MACHINE



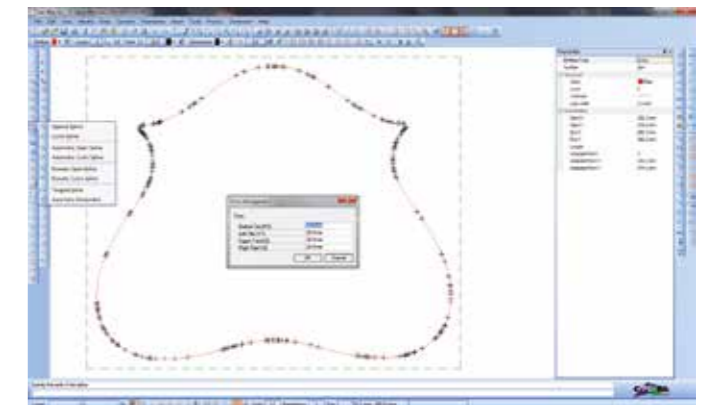
Geo Way module – Is a library of parametrical shapes guarantees quality and fast set up of the production



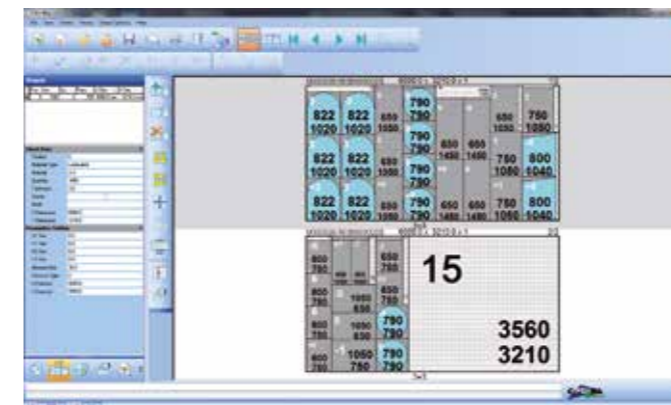
CAD Way module – bi-dimensional CAD for the free shape drawing; import/export of .dxf files and other graphic files prevalent in glass processing



Management of shapes, even complex, for the vinyl cut



Detection of templates edge with shape reading systems and possibility of modification as needed



Creation of optimisations according to the list of glass to be cut and possibility to apply manually every changing needed



Summarizing data monitor consulting like final statement of the optimisation, quantity of scraps for each glass sheet, etc.

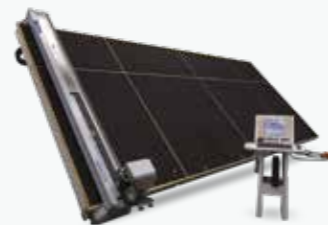
# THE RANGE OF CMS GLASS TECHNOLOGY

# FOR GLASS PROCESSING

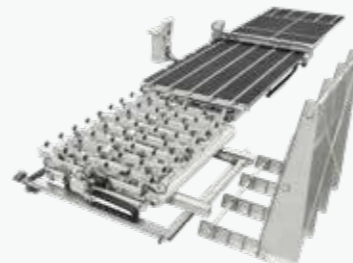
## CUTTING TABLES AND CUTTING LINE



AGIL TR



RUNNER



RUNNER LINE

## HORIZONTAL MACHINING CENTERS



ELECTA



SPEED



GEA



MAXIMA

## VERTICAL MACHINING CENTERS



TAKTIKA



YPSOS



VERTEC MILL



YPSOS + VERTEC MILL

## SEAMING MACHINES



AURA



KART

## WATERJET CUTTING SYSTEMS AND PRESSURE INTENSIFIERS



EASYLINE



SMARTLINE



PROLINE



AQUATEC



EASYPUMP



JETPOWER EVO



GREENJET EVO





**C.M.S. SPA**  
via A. Locatelli, 123 - 24019 Zogno (BG) - IT  
Tel. +39 0345 64111  
[info@cms.it](mailto:info@cms.it)  
[cms.it](http://cms.it)

a company of **scm**group